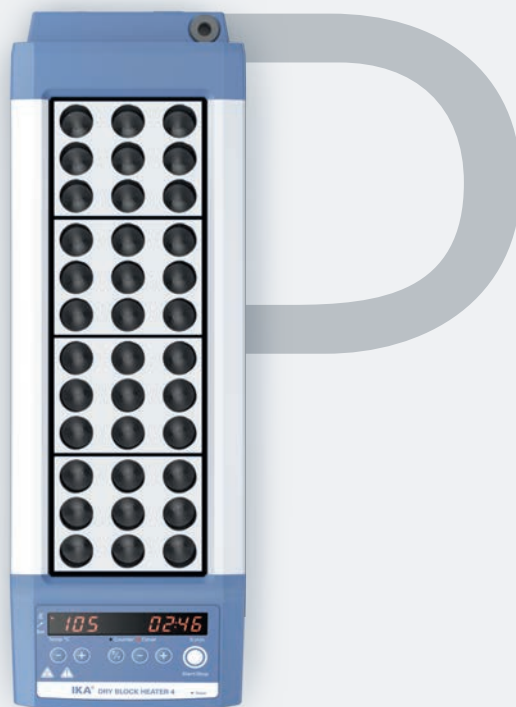


# IKA

designed for scientists

EN



## PRECISE

Passionately enabling chemists to create a better world since 1910.  
From A to Z.

DRY BLOCK HEATERS MADE BY IKA.

# Dry Block Heaters

/// Quick, safe and efficient

**IKA offers an exemplary and diverse range of dry block heaters designed to accommodate various interchangeable heating blocks.**

They provide precise temperature control for repeatable results. These digital block heaters are ideal for melting and boiling point determination, enzyme reactions, incubation and activation of cultures, immunoassays, DNA denaturation, culture media tests, coagulation tests, blood-urea-nitrogen determinations and in situ hybridizations.

They are designed for precise heating of PCR tubes, PCR strips, microcentrifuge tubes, microplates and cuvettes.

<p><b>4</b> /// DRY BLOCK HEATERS</p>	<p><b>6</b> /// HEATING BLOCKS</p>
<p><b>8</b> /// TECHNICAL DATA</p>	<p><b>10</b> /// ACCESSORIES</p>
<p><b>14</b> /// IKA SERVICE</p>	

**3-YEAR WARRANTY\***  
\*2+1 years after registering at [www.ika.com/register](http://www.ika.com/register), glassware and wearing parts excluded



Find out more about IKA and order our fascinating products online: [www.ika.com](http://www.ika.com).

# Dry Block Heaters

/// Accurate and precise

The digital dry block heaters with precisely designed blocks ensure highly accurate and reproducible results, guaranteeing short heating times. The bright, easy to read LED display facilitates very easy setting of the required temperature and accurate monitoring of the actual temperature. Excellent temperature uniformity and stability is ensured.



### PRECISE TEMPERATURE CONTROL

- › Bushing acc. to DIN 12878
- › Rapid heat up rates
- › Exceptional temperature uniformity
- › PT 1000.60 temperature sensor included in the delivery, coated version PT 1000.90 as option available



**A wide range of interchangeable heating blocks** to fit varieties of sample tubes and plates.



**Temperature display** for the actual / set-point temperatures, up / down arrow keys for set-point control.



**Timer display** for accurate and reproducible conditions, up / down arrow keys for set-point control.



**C / T selector button** for choosing between the counter and timer function.



**External probe** for accurate temperature control.



**Threaded hole** for a stand.

### IKA DRY BLOCK HEATERS ARE HIGHLY VERSATILE SUITABLE FOR BROAD RANGE OF APPLICATIONS.

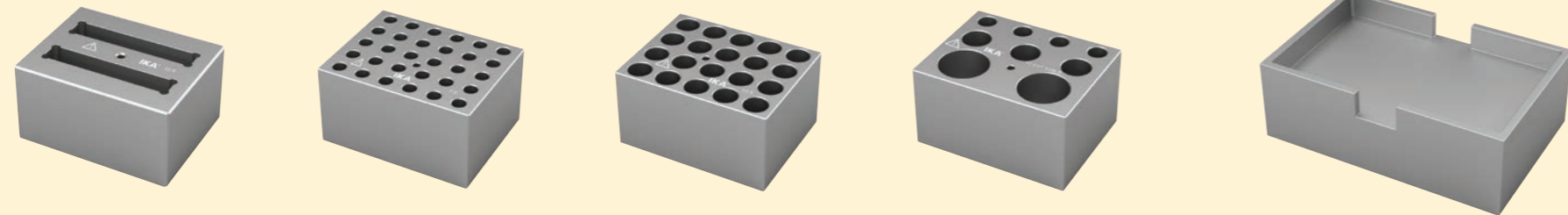
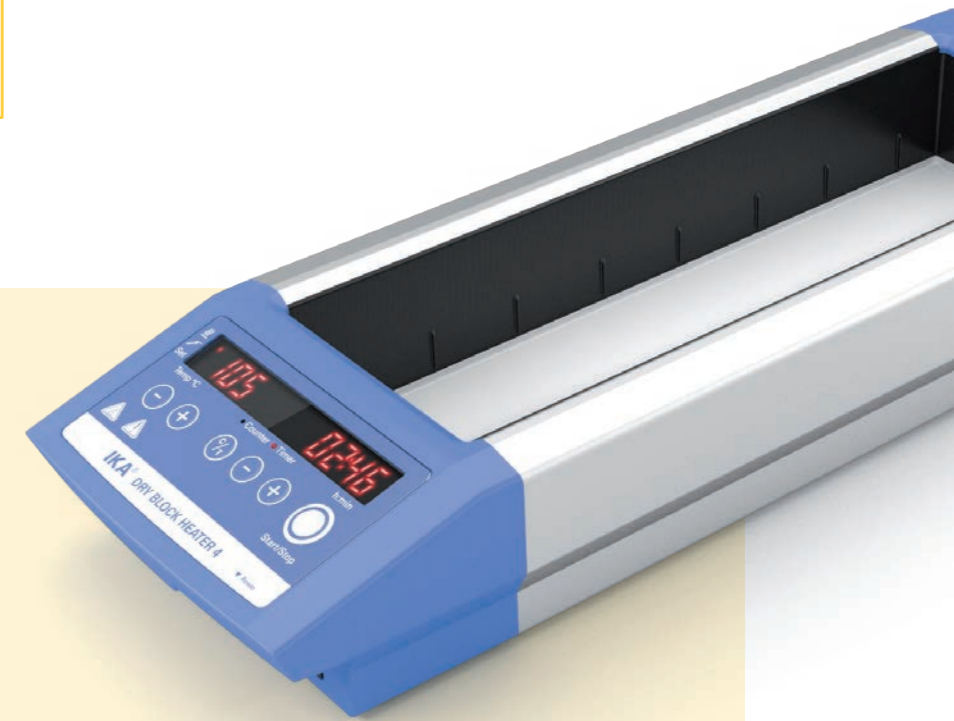
- › DNA extractions
- › DNA analysis
- › Melting point determination
- › Boiling point determination
- › Immunoassays
- › Enzyme reactions
- › Enzymatic processes
- › Enzyme activity studies
- › In situ hybridization
- › Blood-urea-nitrogen determinations
- › Nucleic acid hybridization
- › Coagulation studies
- › Biochemical processes
- › Incubation and activation of cultures
- › Blood examinations
- › Fertile ground processing
- › Restriction digest
- › Denaturation

# Dry Block Heaters

/// Modular heating blocks


IKA dry block heaters are highly versatile and each model can accept separate interchangeable modular heating blocks. They can carry various sample inserts like centrifuge tubes, test tubes, vials, microtitre plates and PCR tubes or strips. Each block has a thermometer well for measuring the block temperature. Anodized aluminum blocks provide superior temperature stability and heat transfer.

PROVIDE SUPERIOR TEMPERATURE STABILITY AND HEAT TRANSFER



# Technical data

/// Dry Block Heaters


 <b>TECHNICAL DATA</b> /// Comparison			
	<b>Dry Block Heater 1</b> Ident. No. 0004025100	<b>Dry Block Heater 2</b> Ident. No. 0004025200	
Number of blocks	1	2	
Heat output	165 W	250 W	
Heating temperature range	RT +5 °C to 120 °C	RT +5 °C to 120 °C	
Display	LED	LED	
Heat control accuracy	± 1 K	± 1 K	
Connection for ext. temperature sensor	DIN 12878	DIN 12878	
Control accuracy with sensor	± 1 K	± 1 K	
Temperature stability within the blocks at 37°C	± 0,5 °C	± 0,5 °C	
Temperature stability within the blocks at 60°C	± 1,5 °C	± 1,5 °C	
Material of the blocks	Aluminum alloy	Aluminum alloy	
Set-up plate dimensions	96 x 75 mm	96 x 152 mm	
Fixed safety circuit	150 °C	150 °C	
Timer	1 min – 99h 59min	1 min – 99h 59min	
Dimensions (W x D x H)	151 x 228 x 73 mm	151 x 304 x 73 mm	
Weight (without blocks)	1 kg	1,3 kg	
Permissible ambient temperature range	+5 to +40 °C	+5 to +40 °C	
Permissible relative moisture	80 %	80 %	
Protection class according to DIN EN 60529	IP 21	IP 21	
Power input	165 W	250 W	
Voltage / Frequency	220 – 240 V / 50/60 Hz	220 – 240 V / 50/60 Hz	
	<b>€ 876,00</b>	<b>€ 1.018,00</b>	

 <b>TECHNICAL DATA</b> /// Comparison			
	<b>Dry Block Heater 3</b> Ident. No. 0004025300	<b>Dry Block Heater 4</b> Ident. No. 0004025400	
Number of blocks	3	4	
Heat output	330 W	412 W	
Heating temperature range	RT +5 °C to 120 °C	RT +5 °C to 120 °C	
Display	LED	LED	
Heat control accuracy	± 1 K	± 1 K	
Connection for ext. temperature sensor	DIN 12878	DIN 12878	
Control accuracy with sensor	± 1 K	± 1 K	
Temperature stability within the blocks at 37°C	± 0,5 °C	± 0,5 °C	
Temperature stability within the blocks at 60°C	± 1,5 °C	± 1,5 °C	
Material of the blocks	Aluminum alloy	Aluminum alloy	
Set-up plate dimensions	96 x 227 mm	96 x 304 mm	
Fixed safety circuit	150 °C	150 °C	
Timer	1 min – 99h 59min	1 min – 99h 59min	
Dimensions (W x D x H)	151 x 380 x 73 mm	151 x 456 x 73 mm	
Weight (without blocks)	1,6 kg	2 kg	
Permissible ambient temperature range	+5 to +40 °C	+5 to +40 °C	
Permissible relative moisture	80 %	80 %	
Protection class according to DIN EN 60529	IP 21	IP 21	
Power input	330 W	412 W	
Voltage / Frequency	220 – 240 V / 50/60 Hz	220 – 240 V / 50/60 Hz	
	<b>€ 1.150,00</b>	<b>€ 1.458,00</b>	


# Accessories

/// Dry Block Heaters


**MICRO CENTRIFUGE TUBES**  
/// Comparison

	Pore size [mm]	Use for	No. of hole	Hole depth [mm]	W x D x H [mm]	Price
DB 1.1 Single block Ident. No. 0004467600	Ø 7,9	PCR tubes (0,5 ml)	30	27,6	95 x 76 x 51	€ 89,00
DB 1.2 Single block Ident. No. 0004467700	Ø 11,5	Eppendorf microtubes (1,5 ml)	20	36,9	95 x 76 x 51	€ 74,00
DB 1.3 Single block Ident. No. 0004467800	Ø 11,1	Microtubes (1,5 ml)	20	39,1	95 x 76 x 51	€ 74,00
DB 1.4 Single block Ident. No. 0004467900	Ø 11,5	Eppendorf microtubes (2,0 ml)	20	38,1	95 x 76 x 51	€ 74,00
DB 1.5 Single block Ident. No. 0004468000	Ø 10,9	Corning microtubes (2,0 ml)	20	38,1	95 x 76 x 51	€ 74,00


**COMBINATION BLOCKS**  
/// Comparison

	Pore size [mm]	Use for	No. of hole	Hole depth [mm]	W x D x H [mm]	Price
DB 3.1 Single block Ident. No. 0004468300	Ø 8,3 / Ø 13,9 / Ø 26,2	Test tube combination 6 mm, 12/13 mm, 25 mm	6 / 5 / 3	48,4 / 48,4 / 48,4	95 x 76 x 51	€ 88,00
DB 3.2 Single block Ident. No. 0004468400	Ø 11,1 / Ø 17,1 / Ø 29,0	Centrifuge tube combination, 1,5 ml, 15 ml, 50 ml	4 / 3 / 2	39,1 / 44,5 / 47,6	95 x 76 x 51	€ 88,00
DB 3.3 Single block Ident. No. 0004468500	Ø 7,9 / Ø 11,1 / Ø 11,5	Microtube combination, 0,5 ml, 1,5 ml, 2,0 ml	6 / 10 / 5	27,6 / 39,1 / 38,1	95 x 76 x 51	€ 88,00

**CONICAL BOTTOM CENTRIFUGE TUBES**  
/// Comparison

	Pore size [mm]	Use for	No. of hole	Hole depth [mm]	W x D x H [mm]	Price
DB 2.1 Single block Ident. No. 0004468100	Ø 17,1	Conical tubes (15 ml)	12	44,5	95 x 76 x 51	€ 89,00
DB 2.2 Single block Ident. No. 0004468200	Ø 29,0	Conical tubes (50 ml)	5	47,6	95 x 76 x 51	€ 88,00

**STANDARD TEST TUBES**  
/// Comparison

	Pore size [mm]	Use for	No. of hole	Hole depth [mm]	W x D x H [mm]	Price
DB 4.1 Single block Ident. No. 0004468600	Ø 8,3	Round bottom tubes (6 mm)	30	48,4	95 x 76 x 51	€ 98,00
DB 4.2 Single block Ident. No. 0004468700	Ø 10,7	Round bottom tubes (10 mm)	24	48,4	95 x 76 x 51	€ 92,00
DB 4.3 Single block Ident. No. 0004468800	Ø 13,9	Round bottom tubes (12/13 mm)	16	48,4	95 x 76 x 51	€ 89,00
DB 4.4 Single block Ident. No. 0004468900	Ø 13,9	Round bottom tubes (12/13 mm)	20	48,4	95 x 76 x 51	€ 92,00
DB 4.5 Single block Ident. No. 0004469000	Ø 17,5	Round bottom tubes (15/16 mm)	12	48,4	95 x 76 x 51	€ 89,00
DB 4.6 Single block Ident. No. 0004469100	Ø 21,0	Round bottom tubes (20 mm)	8	48,4	95 x 76 x 51	€ 88,00
DB 4.7 Single block Ident. No. 0004469200	Ø 26,2	Round bottom tubes (25 mm)	6	48,4	95 x 76 x 51	€ 88,00
DB 4.8 Single block Ident. No. 0004469300	Ø 35,0	Round bottom tubes (35 mm)	4	47,6	95 x 76 x 51	€ 86,00
DB 4.9 Single block Ident. No. 0004469400	Ø 19,1	Round bottom tubes (17/18 mm)	12	48,4	95 x 76 x 51	€ 89,00



Micro centrifuge tubes



Conical bottom centrifuge tubes




Combination blocks



Standard test tubes

**VIALS**  
/// Comparison

	Pore size [mm]	Use for	No. of hole	Hole depth [mm]	W x D x H [mm]	Price
DB 5.1 Single block Ident. No. 0004469500	Ø 12,7	12 mm vials	20	30	95 x 76 x 51	€ 89,00
DB 5.2 Single block Ident. No. 0004469600	Ø 15,8	15 mm vials	20	35	95 x 76 x 51	€ 89,00
DB 5.3 Single block Ident. No. 0004469700	Ø 17,8	17 mm vials	12	45	95 x 76 x 51	€ 86,00
DB 5.4 Single block Ident. No. 0004469800	Ø 19,7	19 mm vials	12	45	95 x 76 x 51	€ 86,00
DB 5.5 Single block Ident. No. 0004469900	Ø 21,7	21 mm vials	9	45	95 x 76 x 51	€ 86,00
DB 5.6 Single block Ident. No. 0004470000	Ø 23,8	23 mm vials	8	45	95 x 76 x 51	€ 86,00
DB 5.7 Single block Ident. No. 0004470100	Ø 25,8	25 mm vials	8	45	95 x 76 x 51	€ 86,00
DB 5.8 Single block Ident. No. 0004470200	Ø 28,8	28 mm vials	6	45	95 x 76 x 51	€ 86,00
DB 5.9 Single block Ident. No. 0004470300	Ø 16,4	16 mm vials	15	45	95 x 76 x 51	€ 89,00



Vials



PCR – plates, tubes, strips




Cuvettes



Microtitre plates

**PCR – PLATES, TUBES, STRIPS**  
/// Comparison

	Pore size [mm]	Use for	No. of hole	Hole depth [mm]	W x D x H [mm]	Price
DB 6.1 Single block Ident. No. 0004470400	Ø 6,4	10 x 8 individual PCR tube strips (0,2 ml tubes)	80	15,5	95 x 76 x 51	€ 101,00
DB 6.2 Single block Ident. No. 0004470500	Ø 6,4	64 x individual PCR tubes (0,2 ml tubes)	64	20,2	95 x 76 x 51	€ 101,00
DB 6.3 Double block Ident. No. 0004470600	Ø 19,1	1 x 96 – well PCR plate (0,2 ml tubes)	96	15,5	95 x 152 x 51	€ 103,00
DB 7.1 Double block Ident. No. 0004470800	–	96 – or 384 – well plate	–	13,5	95 x 152 x 51	€ 136,00
DB 8.1 Single block Ident. No. 0004470700	–	2 x 6 cuvettes (12,5 mm)	–	25,4	95 x 76 x 51	€ 86,00



Temperature sensor

**TEMPERATURE SENSOR**  
/// Comparison

	<b>PT 1000.60</b> Ident. No. 0003516800	<b>PT 1000.90</b> Ident. No. 0004480600
Probe type	Immersion probe	Immersion probe
Sensor type	PT 1000 (DIN IEC 751 Class A)	PT 1000 (DIN IEC 751 Class A)
Accuracy of temperature measurement	± (0,15 + 0,2 % o.Mv.) K	± (0,15 + 0,2 % o.Mv.) K
Response time t9/10	10 sec	10 sec
Temperature measuring range min.	-50 °C	-10 °C
Temperature measuring range max.	+400 °C	+260 °C
Material of probe tube	Stainless steel 1.4571	Stainless steel 1.4571
Coating of probe tube	–	SafeCoat
Diameter of probe tube	3 mm	3,2 mm
Length of probe tube	230 mm	230 mm
Immersion depth min.	25 mm	25 mm
Cable length	1.000 mm	1.000 mm
Probe connection	DIN 45322	DIN 45322
	<b>€ 105,00</b>	<b>€ 149,00</b>

## Worldwide service network

/// Direct contacts in your region

Our dedicated team of engineers provides comprehensive technical service on a global level. If you have any questions, please do not hesitate to contact IKA directly. Alternatively, you can get in touch with your dealer.

IKA guarantees that spare parts will be available for 10 years. In the event of any faults with a device, or if you have any technical questions regarding our products, their maintenance or replacement parts, please call us at **00 8000 4524357** (00 8000 IKAHELP) or send an eMail to **service@ika.de**

## Customizing Center

/// [www.ika.com/customizingcenter](http://www.ika.com/customizingcenter)

It is important that IKA products perform in real laboratory applications. We have a special program of product solutions that are customized to your individual needs. If you cannot find the right device in our standard product range, please send us the details of the specification you need using the online form. Our team will check the feasibility of the specification and offer you a solution.

Please visit [www.ika.com/customizingcenter](http://www.ika.com/customizingcenter) to have look at the product modification requests that we have already implemented.

## IKA Application Support

/// [www.ika.com/applicationsupport](http://www.ika.com/applicationsupport)

Our Application Center spans 400 m<sup>2</sup> and is equipped with the most modern facilities for presenting and testing laboratory equipment and processes. The Center brings us even closer to our customers and improves our service. If you are interested, you can use our facilities to test processes that include stirring, shaking, dispersing, grinding, heating, analysis and distillation.

Call us on **00 8000 4522777 (00 8000 IKAAPPS)** or send an email to **applicationsupport@ika.de** or visit our website at **[www.ika.com/applicationsupport](http://www.ika.com/applicationsupport)**.



Our Application Center covers **400 m<sup>2</sup>** and offers modern equipment for demonstrating and testing laboratory devices and processes.



**Send us your sample.** We will run a test with the suitable device - within within 2 working days.



We would be happy to help you find the **perfect device** for your application.



Interested individuals and customers can **test processes** including stirring, shaking, dispersing, milling, heating, analyzing and distilling.





designed for scientists

EN

#### IKA-Werke GmbH & Co. KG

Janke & Kunkel-Straße 10, 79219 Staufen, Germany

Phone: +49 7633 831-0, Fax: +49 7633 831-98

eMail: sales@ika.de

### /// WORLDWIDE

#### USA

IKA Works, Inc.

Phone: +1 910 452-7059

eMail: sales@ika.net

#### MALAYSIA

IKA Works (Asia) Sdn Bhd

Phone: +60 3 6099-5666

eMail: sales.lab@ika.my

#### JAPAN

IKA Japan K.K.

Phone: +81 6 6730 6781

eMail: info\_japan@ika.ne.jp

#### KOREA

IKA Korea Ltd.

Phone: +82 2 2136 6800

eMail: info@ika.kr

#### CHINA

IKA Works Guangzhou

Phone: +86 20 8222 6771

eMail: info@ika.cn

#### INDIA

IKA India Private Limited

Phone: +91 80 26253 900

eMail: info@ika.in

#### BRASIL

IKA do Brasil

Phone: +55 19 3772-9600

eMail: sales@ika.net.br

#### POLAND

IKA Poland Sp. z o.o.

Phone: +48 22 201 99 79

eMail: sales.poland@ika.com

#### ENGLAND

IKA England LTD.

Phone: +44 1865 986 162

eMail: sales.english@ika.com

### /// ONLINESHOP

For more information on our products or to order online, please visit:

[www.ika.com](http://www.ika.com)

### /// SOCIAL MEDIA



IKAworldwide



IKAworldwide /// #lookattheblue



@IKAworldwide

Prices are valid until December 31, 2017.

All prices exclude VAT.

IKA reserves the right to modify products, part numbers, and pricing.